



W R E

FIRE

Don't underestimate the power of fire.

Everyone can agree that fire has the power to elevate any space to a new level. It's fun, enchanting, and nothing extends the usable season of your outdoor space in the same way.

We design and fabricate fire pits of the highest quality available, employing precision welding and hand-crafted detail. Trust our years of experience and countless hours of testing and development. Take pride knowing that your new showpiece was made by hand, here in the USA. Whether you choose an off-the-shelf model or go with a fully custom design, you will not be disappointed.

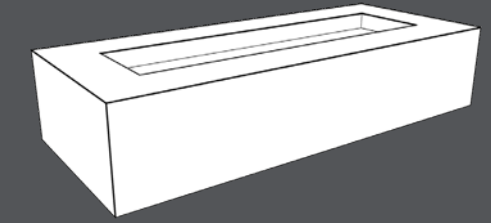
The creative options are limitless. Choose your shape, size, materials, color and more.

NOTE: These fire pits are to be used in well-ventilated, outdoor areas only.





INCITE
60 x 30 x 15
Rusted Steel
Tumbled Lava
Match Light



INCITE

Simple and versatile, Incite is a very popular design. It is at home in almost any style of landscaping from traditional to modern.

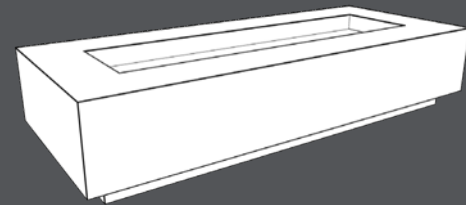
STANDARD SIZES:

L x W x H (Overall) | **L x W** (Trough) | **BTU** Rating

60" x 24" x 15"	44" x 8"	75,000
60" x 30" x 15"	44" x 14"	75,000
72" x 24" x 15"	56" x 8"	100,000
72" x 30" x 15"	56" x 14"	100,000
84" x 36" x 15"	64" x 16"	125,000
96" x 30" x 15"	80" x 14"	150,000
96" x 36" x 15"	76" x 16"	150,000
120" x 36" x 15"	100" x 16"	200,000

OPTIONS:

- Rusted Steel / Powder Coated Aluminum / Weathered Aluminum
- Tumbled Lava / Rough Lava / Fire Glass
- Match Light / Electronic Ignition
- 3cm Quartz Countertop



INCITE-T

Identical to the Incite except for an added 3" toe kick. Count on its versatile style to elevate any outdoor space. Optional two-toned colors for the toe kick are available for an extra-custom effect.

STANDARD SIZES:

L x W x H (Overall) | **L x W** (Trough) | **BTU** Rating

60" x 24" x 15"	44" x 8"	75,000
60" x 30" x 15"	44" x 14"	75,000
72" x 24" x 15"	56" x 8"	100,000
72" x 30" x 15"	56" x 14"	100,000
84" x 36" x 15"	64" x 16"	125,000
96" x 30" x 15"	80" x 14"	150,000
96" x 36" x 15"	76" x 16"	150,000
120" x 36" x 15"	100" x 16"	200,000

OPTIONS:

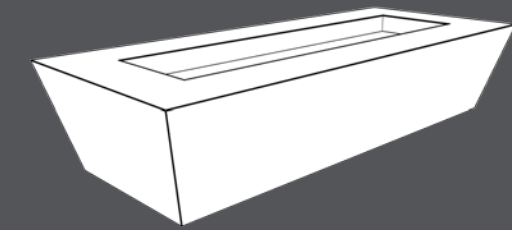
- Rusted Steel / Powder Coated Aluminum / Weathered Aluminum
- Tumbled Lava / Rough Lava / Fire Glass
- Match Light / Electronic Ignition
- 3cm Quartz Countertop



INCITE-T
Custom 66 x 30 x 15
Two-tone Powder Coated Aluminum
Tumbled Lava
Match Light



ÉLAN
72 x 30 x 15
Powder Coated Aluminum
Tumbled Lava
Match Light



ÉLAN

This design boasts a distinctive, angled base that immediately sets it apart from the crowd.

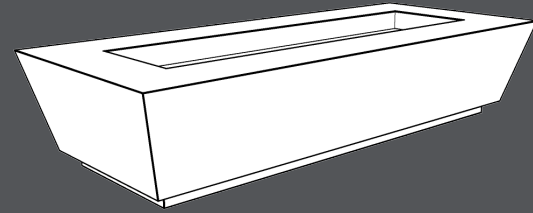
STANDARD SIZES:

L x W x H (Overall) | **L x W** (Trough) | **BTU** Rating

60" x 24" x 15"	30" x 8"	75,000
60" x 30" x 15"	30" x 14"	75,000
72" x 24" x 15"	38" x 8"	100,000
72" x 30" x 15"	38" x 14"	100,000
84" x 36" x 15"	44" x 16"	125,000
96" x 30" x 15"	54" x 14"	150,000
96" x 36" x 15"	51" x 16"	150,000
120" x 36" x 15"	100" x 16"	200,000

OPTIONS:

- Rusted Steel / Powder Coated Aluminum / Weathered Aluminum
- Tumbled Lava / Rough Lava / Fire Glass
- Match Light / Electronic Ignition
- 3cm Quartz Countertop



ÉLAN-T

Identical to the Élan except for an added 2" toe kick. Optional two-toned colors for the toe kick are available for an extra-custom effect.

STANDARD SIZES:

L x W x H (Overall) | **L x W** (Trough) | **BTU** Rating

60" x 24" x 15"	30" x 8"	75,000
60" x 30" x 15"	30" x 14"	75,000
72" x 24" x 15"	38" x 8"	100,000
72" x 30" x 15"	38" x 14"	100,000
84" x 36" x 15"	44" x 16"	125,000
96" x 30" x 15"	54" x 14"	150,000
96" x 36" x 15"	51" x 16"	150,000
120" x 36" x 15"	100" x 16"	200,000

OPTIONS:

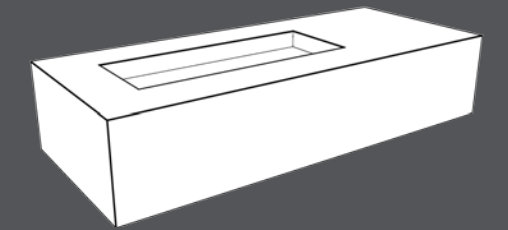
- Rusted Steel / Powder Coated Aluminum / Weathered Aluminum
- Tumbled Lava / Rough Lava / Fire Glass
- Match Light / Electronic Ignition
- 3cm Quartz Countertop



ÉLAN-T
60 x 30 x 15
Powder Coated Aluminum
Quartz Countertop
Tumbled Lava
Match Light



PYRE
72 x 24 x 15
Powder Coated Aluminum
Tumbled Lava
Match Light



PYRE

Pyre's offset trough lends an extra layer of visual interest along with adding the functionality of extra table space. This modern fire element is stylish and classy.

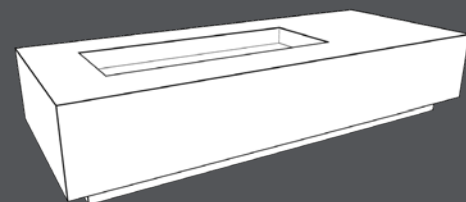
STANDARD SIZES:

L x W x H (Overall) | **L x W** (Trough) | **BTU** Rating

60" x 24" x 15"	30" x 8"	50,000
60" x 30" x 15"	30" x 14"	50,000
72" x 24" x 15"	38" x 8"	75,000
72" x 30" x 15"	38" x 14"	75,000
84" x 36" x 15"	44" x 16"	75,000
96" x 30" x 15"	54" x 14"	100,000
96" x 36" x 15"	51" x 16"	100,000
120" x 36" x 15"	70" x 16"	125,000

OPTIONS:

- Rusted Steel / Powder Coated Aluminum / Weathered Aluminum
- Tumbled Lava / Rough Lava / Fire Glass
- Match Light / Electronic Ignition
- 3cm Quartz Countertop



PYRE-T

Identical to the Pyre except for an added 3" toe kick. Its modern styling won't disappoint. Optional two-toned colors for the toe kick are available for an extra-custom effect.

STANDARD SIZES:

L x W x H (Overall) | **L x W** (Trough) | **BTU** Rating

60" x 24" x 15"	30" x 8"	50,000
60" x 30" x 15"	30" x 14"	50,000
72" x 24" x 15"	38" x 8"	75,000
72" x 30" x 15"	38" x 14"	75,000
84" x 36" x 15"	44" x 16"	75,000
96" x 30" x 15"	54" x 14"	100,000
96" x 36" x 15"	51" x 16"	100,000
120" x 36" x 15"	70" x 16"	125,000

OPTIONS:

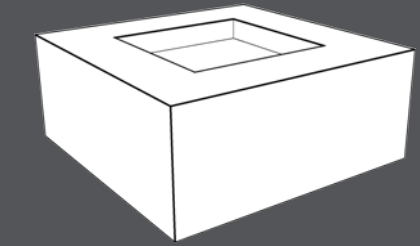
- Rusted Steel / Powder Coated Aluminum / Weathered Aluminum
- Tumbled Lava / Rough Lava / Fire Glass
- Match Light / Electronic Ignition
- 3cm Quartz Countertop



PYRE-T
72 x 30 x 15
Two-tone Powder Coated Aluminum
Tumbled Lava
Match Light



IGNIS
36 x 36 x 15
Powder Coated Aluminum
Tumbled Lava
Electronic Ignition



IGNIS

Ignis is elegantly simple for the settings where "less is more."

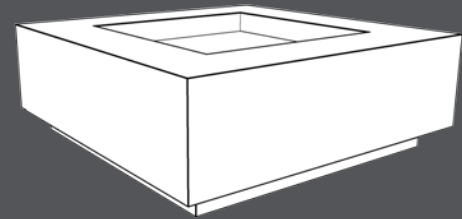
STANDARD SIZES:

L x W x H (Overall) | **L x W** (Trough) | **BTU** Rating

36" x 36" x 15"	20" x 20"	125,000
42" x 42" x 15"	26" x 26"	200,000
48" x 48" x 15"	28" x 28"	200,000
60" x 60" x 15"	40" x 40"	300,000

OPTIONS:

- Rusted Steel / Powder Coated Aluminum / Weathered Aluminum
- Tumbled Lava / Rough Lava / Fire Glass
- Match Light / Electronic Ignition
- 3cm Quartz Countertop



IGNIS-T

Identical to the Ignis except for an added 3" toe kick. Optional two-toned colors for the toe kick are available for an extra-custom effect.

STANDARD SIZES:

L x W x H (Overall) | **L x W** (Trough) | **BTU** Rating

36" x 36" x 15" | 20" x 20" | 125,000

42" x 42" x 15" | 26" x 26" | 200,000

48" x 48" x 15" | 28" x 28" | 200,000

60" x 60" x 15" | 40" x 40" | 300,000

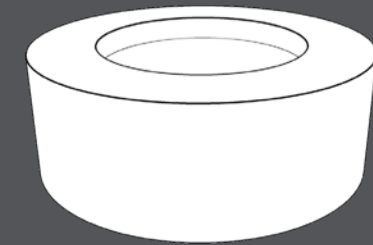
OPTIONS:

- Rusted Steel / Powder Coated Aluminum / Weathered Aluminum
- Tumbled Lava / Rough Lava / Fire Glass
- Match Light / Electronic Ignition
- 3cm Quartz Countertop



IGNIS-T
42 x 42 x 15
Two-tone Powder Coated Aluminum
Tumbled Lava
Match Light

ARCO
36 x 15
Powder Coated Aluminum
Tumbled Lava
Match Light



ARCO

This design fits right in with both contemporary and traditional settings. It's easy on the eyes and speaks for itself.

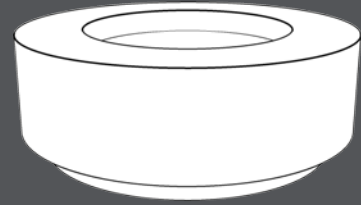
STANDARD SIZES:

DIA x H (Overall) | **DIA** (Trough) | **BTU** Rating

36" x 15"	20"	65,000
42" x 15"	26"	125,000
48" x 15"	28"	125,000
60" x 15"	40"	250,000

OPTIONS:

- Rusted Steel / Powder Coated Aluminum / Weathered Aluminum
- Tumbled Lava / Rough Lava / Fire Glass
- Match Light / Electronic Ignition
- 3cm Quartz Countertop



ARCO-T

Identical to the Arco except for an added 3" toe kick. Optional two-toned colors for the toe kick are available for an extra-custom effect.

STANDARD SIZES:

DIA x H (Overall) | **DIA** (Trough) | **BTU** Rating

36" x 15"	20"	65,000
42" x 15"	26"	125,000
48" x 15"	28"	125,000
60" x 15"	40"	250,000

OPTIONS:

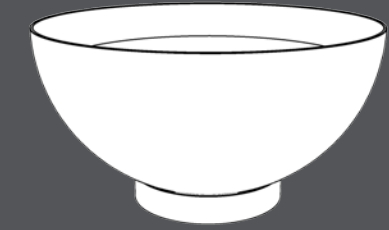
- Rusted Steel / Powder Coated Aluminum / Weathered Aluminum
- Tumbled Lava / Rough Lava / Fire Glass
- Match Light / Electronic Ignition
- 3cm Quartz Countertop



ARCO-T
36 x 15
Powder Coated Aluminum
Tumbled Lava
Match Light



CALDO
40 x 19
Rusted Steel
Tumbled Lava
Match Light



CALDO

Iconic and eye-catching, this fire bowl will finish off any sitting area with style.

STANDARD SIZES:

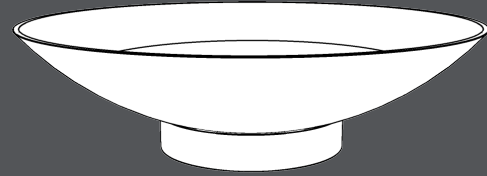
Approximate DIA x H | BTU Rating

30" x 19" | 125,000

40" x 19" | 250,000

OPTIONS:

- Rusted Steel / Powder Coated Steel
- Tumbled Lava / Rough Lava / Fire Glass
- Match Light / Electronic Ignition



LUSTRE

With a shallow profile, the Lustre is as elegant as it is useful. Place one in a normal fire pit setting, or use them to top columns for extra visual impact.

STANDARD SIZES:

Approximate DIA x H | BTU Rating

32" x 10"		200,000
36" x 11"		200,000
42" x 13"		250,000
48" x 14"		300,000

OPTIONS:

- Rusted Steel / Powder Coated Steel
- Tumbled Lava / Rough Lava / Fire Glass
- Match Light / Electronic Ignition



LUSTRE
32" x 10"
Powder Coated Steel
Tumbled Lava
Match Light



CUSTOM FIRE

There are no limits here. Let's break the mold and build something together that clearly communicates your style. What could be more fun than that?



Our fire pits are hand-crafted here in the USA. We don't bend our pieces out of flimsy stock; we cut each piece and fully weld and polish each seam to create the crisp edges that set us apart from other manufacturers.

FIRE PITS come with the following standard features:

- Adjustable leveling feet
- Stainless steel, whisper flex-lines
- Stainless steel burner
- 1/2" NPT (NG) natural gas connection
- Key gas valve

Custom options include:

- Conversion to internal propane tank (LP) fuel source
- Adjustments to size, shape, etc.
- Custom colors, materials, and other finishes
- LED accent lighting under toe kick

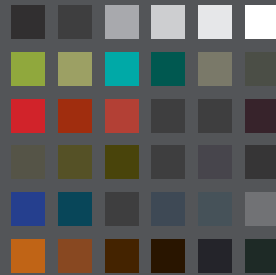
Contact us for more information regarding ordering, custom options, and warranties:
801-608-5312 | info@outdoorelementsdesign.com

STANDARD FEATURES

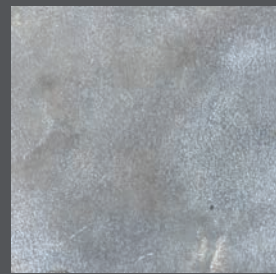
MATERIALS + FINISHES



STEEL is hard and very strong. Most metal fire pits on the market are steel. Steel also rusts. For that reason, the only finish we offer for our steel products is a natural rust patina. We have found that even painted and powder coated steel can rust eventually, causing the coating to fail. Rusted steel is a beautiful option that brings natural depth to the landscape in a way that nothing else can. The rust patina develops over time and will gradually change in hue. Early in the process, the rust color can stain adjacent hardscape surfaces so care must be taken when locating a steel fire element or water feature. As it ages, the patina becomes more and more stable.

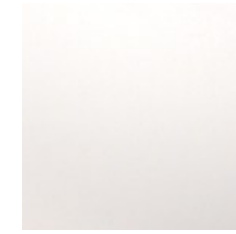


POWDER COATED ALUMINUM can't be beat if you're looking for a solid color. Powder coating is among the most durable metal coatings available and allows for nearly infinite color and texture options. It is applied as a powder then baked onto the metal, forming a durable, fade-resistant coating. This process also boasts the advantage of being VOC free. We have carefully selected a variety of winning standard colors and, for a small additional fee, we can use any custom color you wish.



WEATHERED ALUMINUM is another excellent finish option. We prepare the raw aluminum and then treat it to produce a weathered patina that resembles the antique zinc and lead planters of the old-world. As with other natural patinas, the finish can vary with age and location. In contrast with rusted steel, there is no need to worry about staining adjacent surfaces.

STANDARD COLORS



SATIN WHITE



TEXTURED WHITE



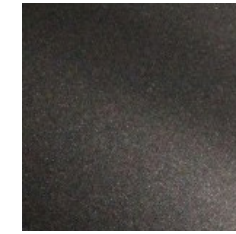
SILVER



AUTUMN GRAY



TEXTURED GRAY



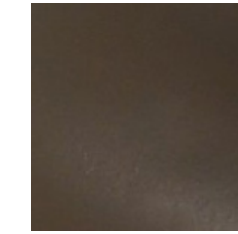
CHARCOAL



GRAY BRONZE



METALLIC BRONZE



BRONZE



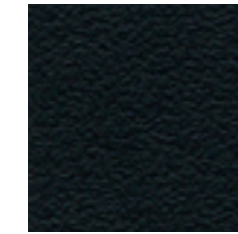
TEXTURED BRONZE



SPECKLED BLACK



SATIN BLACK



TEXTURED BLACK



TEXTURED RUST



SATIN ORANGE



GLOSS ORANGE



GLOSS RED



SATIN RED



SATIN BLUE



AQUA



LIME GREEN

*These swatches are for reference only. While we attempt to make our color swatches as accurate as possible, it is likely that the actual powder coat colors will vary from those shown here. For a more accurate representation please request a physical sample from our office. 801.608.5312

Visit us at outdoorelementsdesign.com
or call 801-608-5312

email: info@outdoorelementsdesign.com

